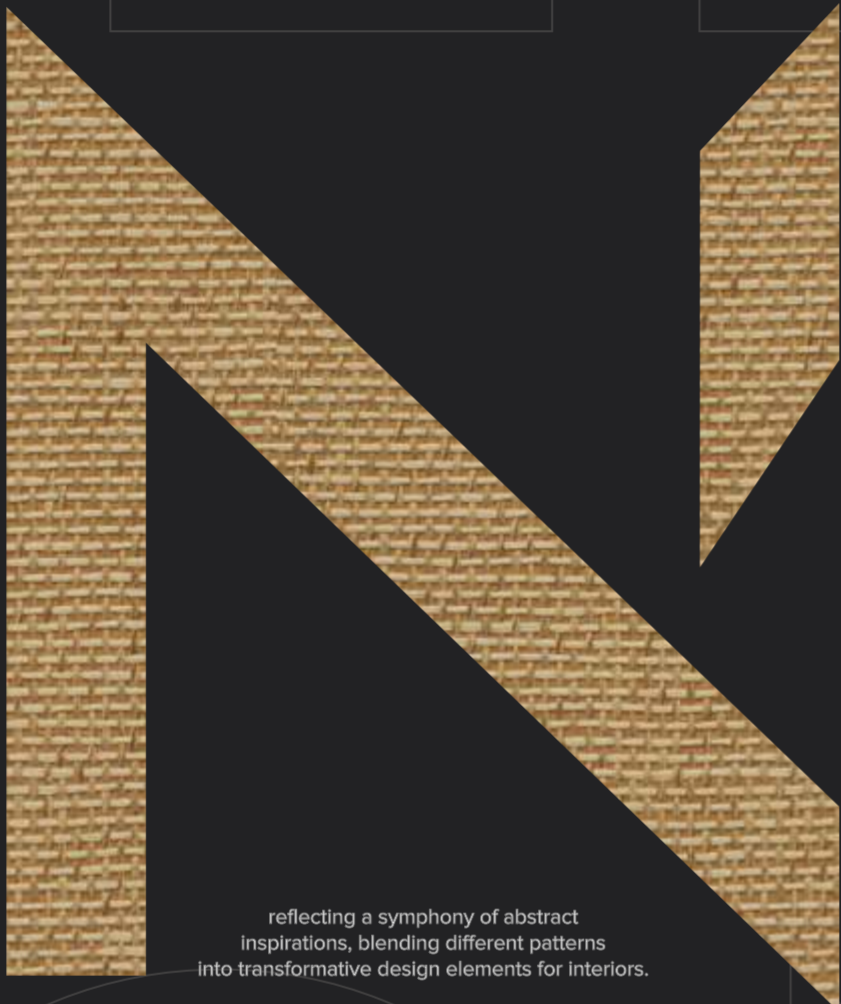


ABSTRACT

Laminates that embody nature, art, durability, sustainability, emotion, and culture,
transforming spaces with rich, creative expressions.

NELTON[®]
— décoratif laminart —



reflecting a symphony of abstract inspirations, blending different patterns into transformative design elements for interiors.



NELTON[®]
— décoratif laminart —

www.nelsonlamine.com/nelton

NELTON[®]

— décoratif laminart —

THE BRAND STORY

Nelton, a signature collection from Nelson Laminates, offers an exquisite array of laminate shades and styles, each meticulously designed to transform any space into a cherished sanctuary. Revered by artisans, carpenters, and architects alike, Nelton stands as their primary choice for creating captivating interiors. It's a celebration of unique hues and textures, ensuring each laminate not only serves as a design element but as an embodiment of artistry and elegance. Nelton laminates are the canvas upon which professionals and homeowners craft their dream spaces, promising an ambiance where every detail is a testament to their personal style.



CORPORATE OVERVIEW

Nelson Laminates Pvt. Ltd. epitomises pioneering spirit, cost-effectiveness, and a steadfast dedication to exceptional quality. Our foundational values drive us to produce avant-garde laminates that set new benchmarks within the industry. Our customer-centric approach is geared towards fostering durable partnerships through responsive, proficient service, echoing our commitment to distinction. Leveraging sophisticated European technologies within our advanced facilities, we consistently deliver flawless, consistent, and superior laminate products.

Our team, consisting of expert technocrats, esteemed advisors, visionary leaders, seasoned overseers, and dedicated artisans, works in unison to maintain our stringent quality protocols. Our expansive distribution network spans the nation, ensuring seamless access to our valued clientele, solidifying the Nelson brand as a synonym for surpassing quality expectations.

Nelson's narrative is decorated with accomplishments, endearing us to a vast customer base in India, courtesy of our outstanding 'UREA FREE' phenolic products. Our heritage is a testament to an unwavering pursuit of innovation, meticulous craftsmanship, and lasting excellence, with each laminate reflecting a chapter of this enduring story.

www.nelsonlaminat.com



DISCOVER
THE HIDDEN AND
MARVELOUS
CREATIONS OF
ABSTRACT MUSES

NELTON[®]
— décoratif laminart —

TABLE OF CONTENTS



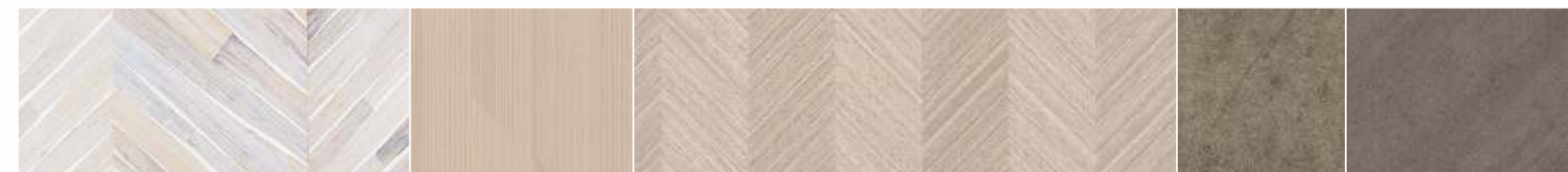
2206
NT-10(32)

2204
NT-10(40)

2201
NT-10(38)

2043
NT-08(48)
HGL(50)

2041
NT-08(51)
HGL(52)



2205
NT-07(4)

2058
NT-05(27), SM(28)

2055
NT-07(2)

2038
NT-10(44)
HGL(43)

2040
NT-09(41)
HGL(41)



2060
SM(29)

2061
NT-07(2061), HGL(23)

2062
NT-07(24), HGL(23)

2059
SM(30)

2056
NT-07(19), NE-11(20)



2209
NT-18(13)

2221
NT-18(17)

2212
NT-18(11)

2214
NT-18(17)

2222
NT-18(11)



2211
NT-18(7)

2219
NT-18(16)

2218
NT-18(12)

2220
NT-18(16)

2216
NT-18(5)



ELEGANT CHEVRON

NELTON[®]
— décoratif laminart —



NT-07-2055
oblique deco



THE CARVING

NELTON[®]
— décoratif laminart —



2205
8 X 4" SHEET VIEW



ECO FRIENDLY
LOW VOC-ODOR



COEQUAL TO
NATURAL VENNER



1.00 / 1.25 MM
GENUINE THICKNESS



CE
CONFORMITÉ
EUROPÉENNE



ADEQUATE
QUALITY

This laminate whispers tales of ancient floors within palatial halls, its delicate herringbone pattern a symphony of interwoven light and shadow, crafting an ambiance of refined history and serene elegance.



NT-07-2205
scandinavian





NT-18-2216
aged zigzag



NT-18-2210
natural cane

NELTON[®]
— décoratif laminart —

INTER- WOVEN

Step into the soft play of light and shadow, where the left's grey hues craft a mosaic of quiet complexity, and the right's gentle beige offers a soothing, simplistic charm — both united in their textured finesse.





NT-18-2211
zigzag



NT-18-2215
checkered jute



Experience the mosaic of tranquillity, where woven shades of taupe converge in delicate harmony, crafting a serene tapestry that speaks to both the artistry of design and the quietude of minimalist elegance.

ANCESTRAL MOTIFS

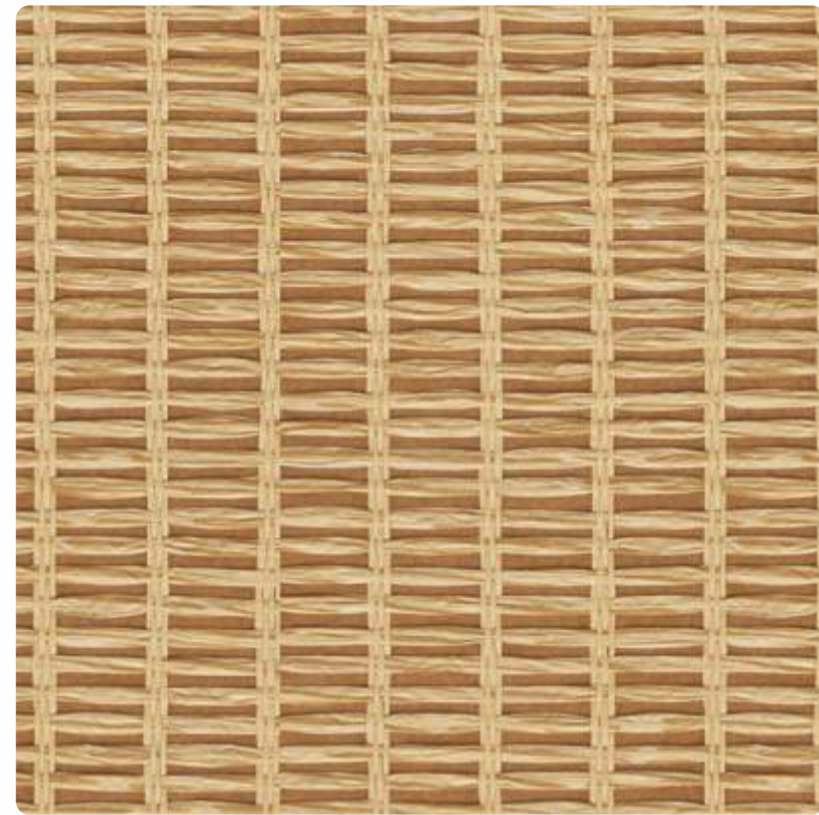
Behold a canvas where geometric precision meets organic flow, in a lattice of greys and creams, invoking a dance of ancestral motifs wrapped in modern sophistication — a silent sonnet of design

NELTON[®]
— décoratif laminart —



NT-18-2208
grey lkkat

-  ECO FRIENDLY
LOW VOC-ODOR
-  COEQUAL TO
NATURAL VENNER
-  1.00 / 1.25 MM
GENUINE THINNESS
-  CE
CONFORMITE
EUROPEENNE
-  ADEQUATE
QUALITY



NT-18-2222
rice straw



STRAW PESTRY



NT-18-2212
golden bagru



NT-18-2218
grey bagru



Unveil an intricate spectacle of design, where stark geometric meld with soft neutrals, creating a harmonious interplay that resonates with echoes of tradition and whispers of modernity in every interlocking pattern.

INTERLACE

NELTON[®]
— décoratif laminart —





NT-18-2209
golden can

NELTON[®]
— décoratif laminart —

-  ECO FRIENDLY
LOW VOC-ODOR
-  COEQUAL TO
NATURAL VENNER
-  1.00 / 1.25 MM
GENUINE THICKNESS
-  CE
CONFORMITÉ
EUROPÉENNE
-  ADEQUATE
QUALITY

CANVAS MOODBOARD

Gaze upon the understated elegance, where delicate golden threads converge in a soft, tactile whisper, presenting a simplicity that radiates an aura of refined tranquility and subdued opulence.



SILENT LOOM

The minimalist charm, inspired by the intricate weaves where the cool grey and warm beige tones merge in a delicate balance, offering a canvas that speaks to serenity every pixel-like detail.

NELTON[®]
— décoratif laminart —



NT-18-2220
ink bloat jute



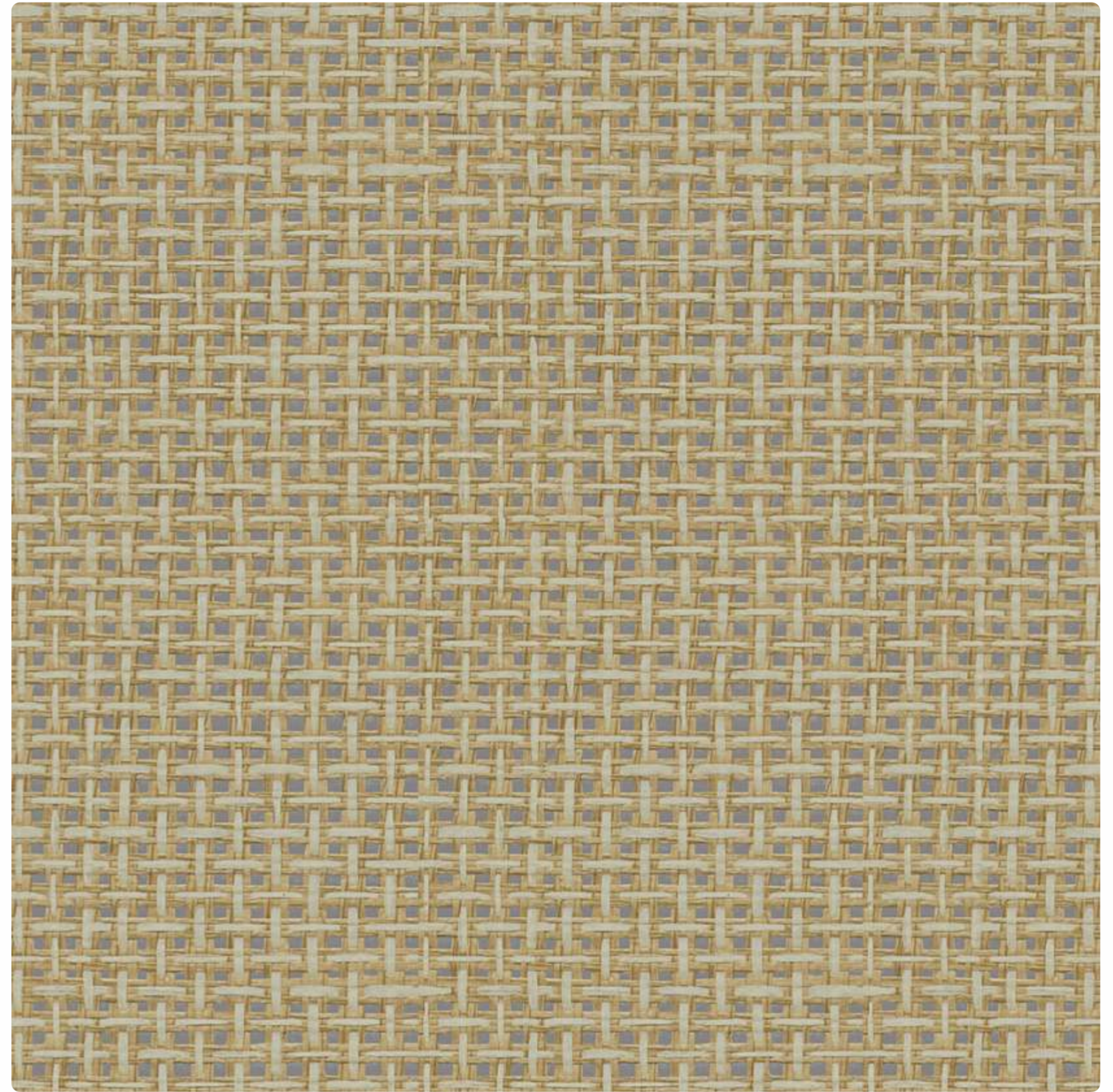
NT-18-2219
grey jute



NT-18-2214
hessian



NT-18-2221
flaxen twine



NT-18-2217
soft straw

Inspired by a collection of yet another weave, where strands of golden hues craft a narrative of textured elegance, seamlessly uniting spaces with an air of crafted aesthetics and a whisper of timeless luxury.

GOLDEN HUES

NELTON[®]
— décoratif laminart —





NT-07-2056
saddle stitch



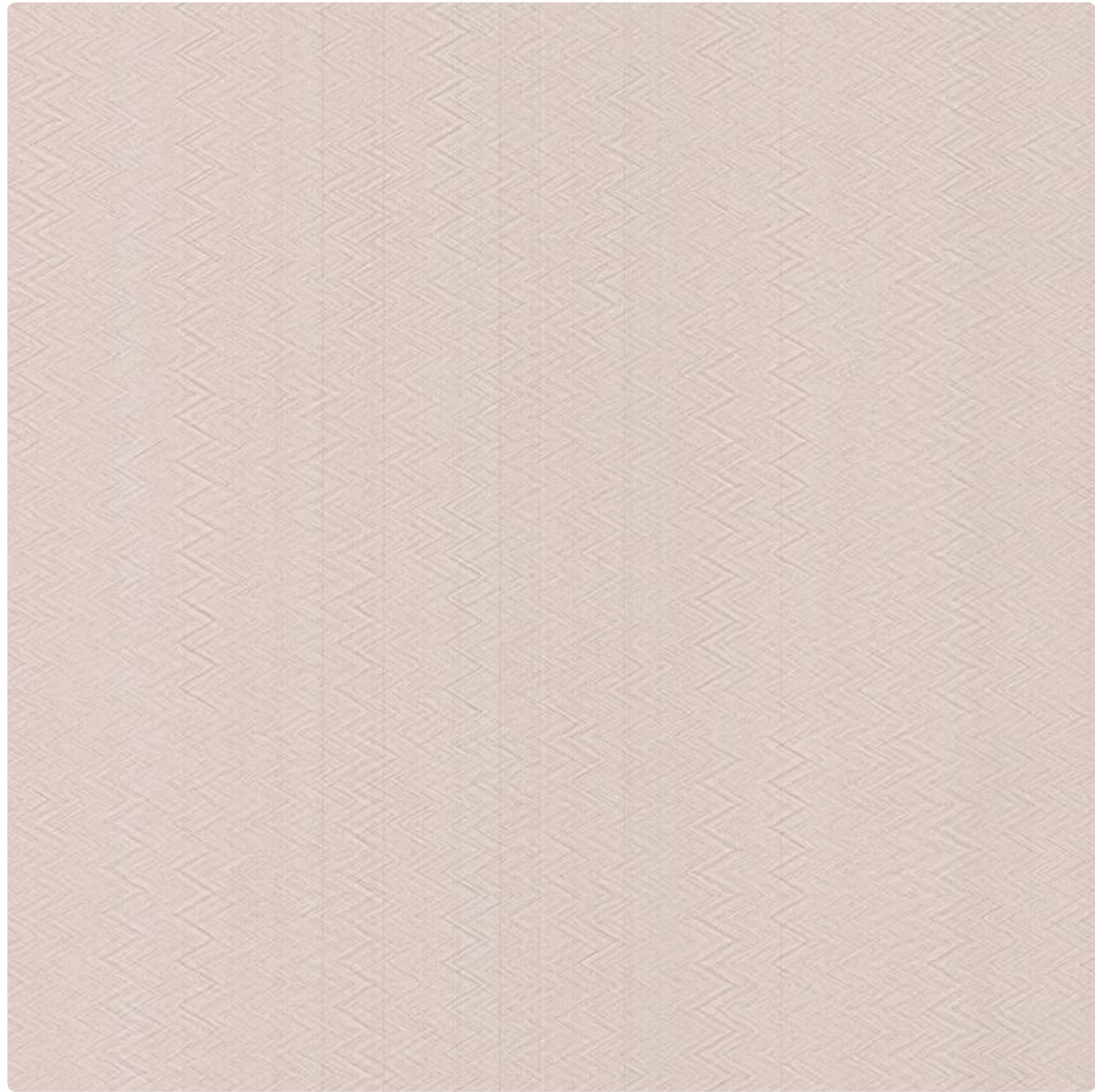
NT-11-2056
saddle stitch

NELTON[®]
— décoratif laminart —

The vivid linear strokes, formulating the subtle triangular geometric patterns, is reminiscent of abstract expressions. Ready to transform your interiors into contemporary themes, these designs are perfect for modern themes.

LINEAR STROKES

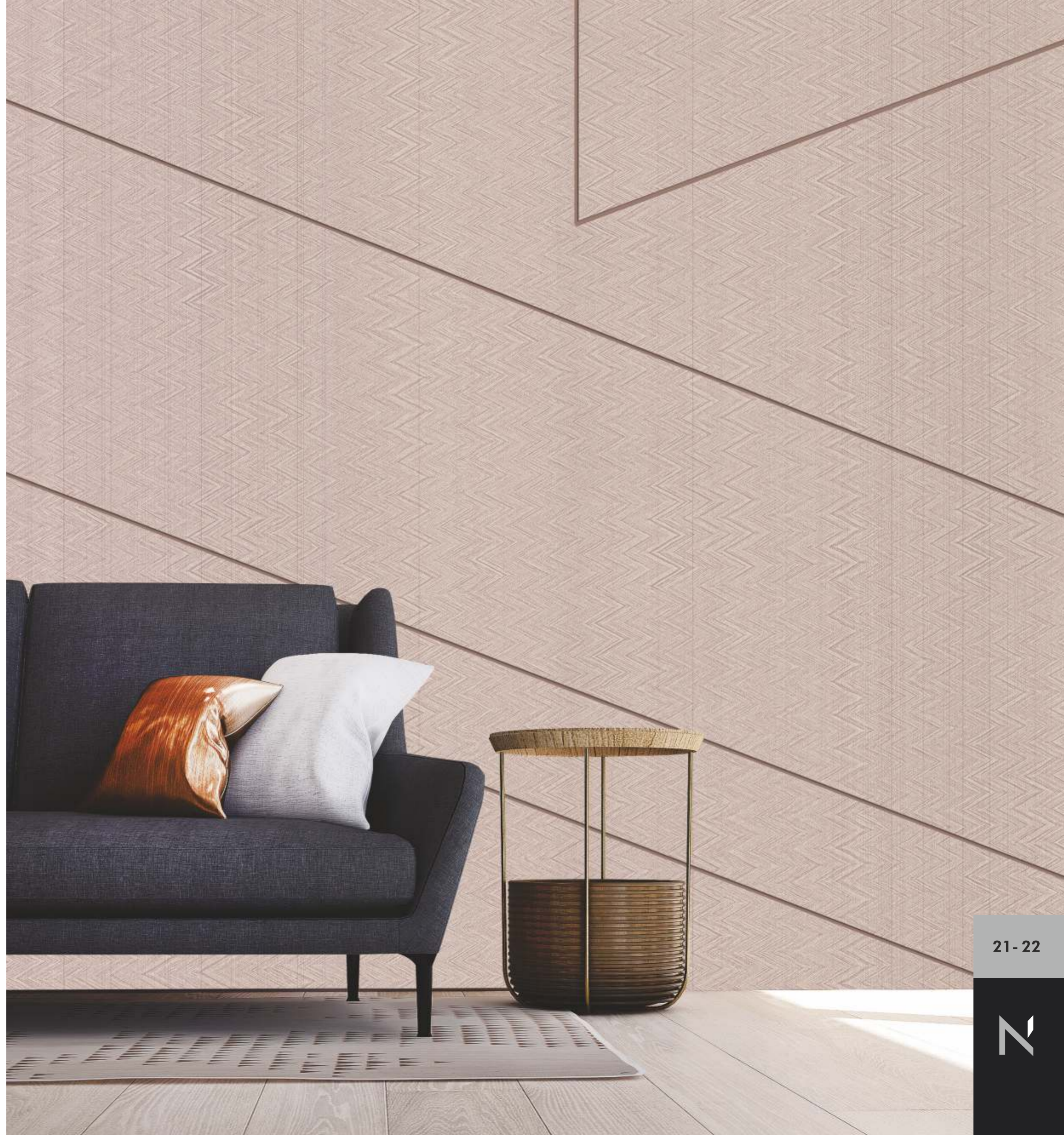




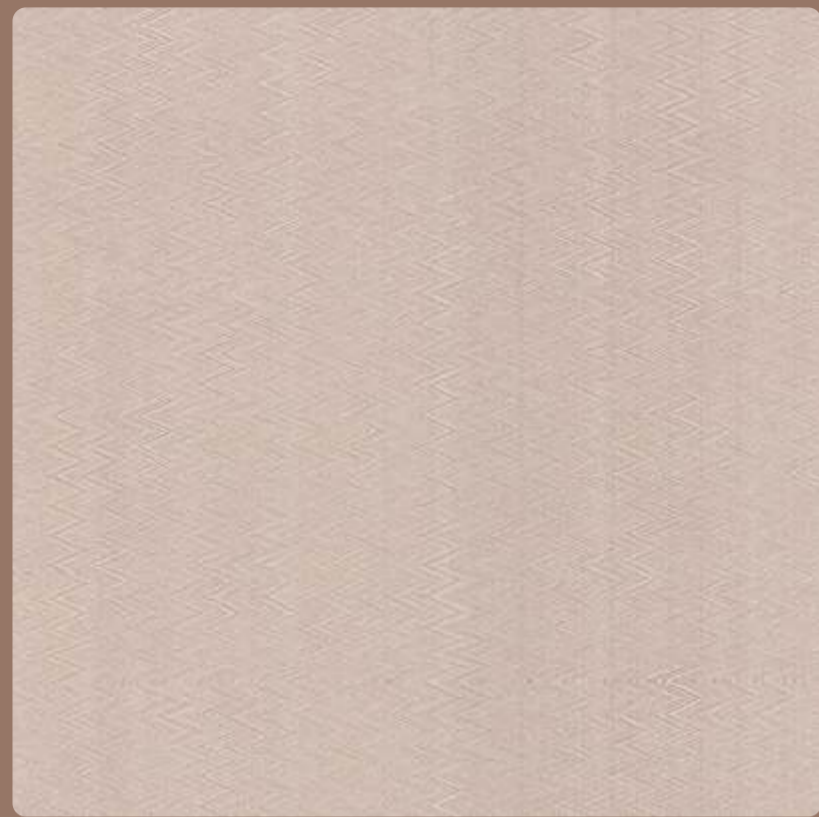
NT-07-2061
meandering

NELTON[®]
— décoratif laminart —

Bringing back the long forgotten era of abstract expression from the retro times, these laminates are allows you to seamlessly recreate the era. That's timeless, simple and yet makes a great first impression.



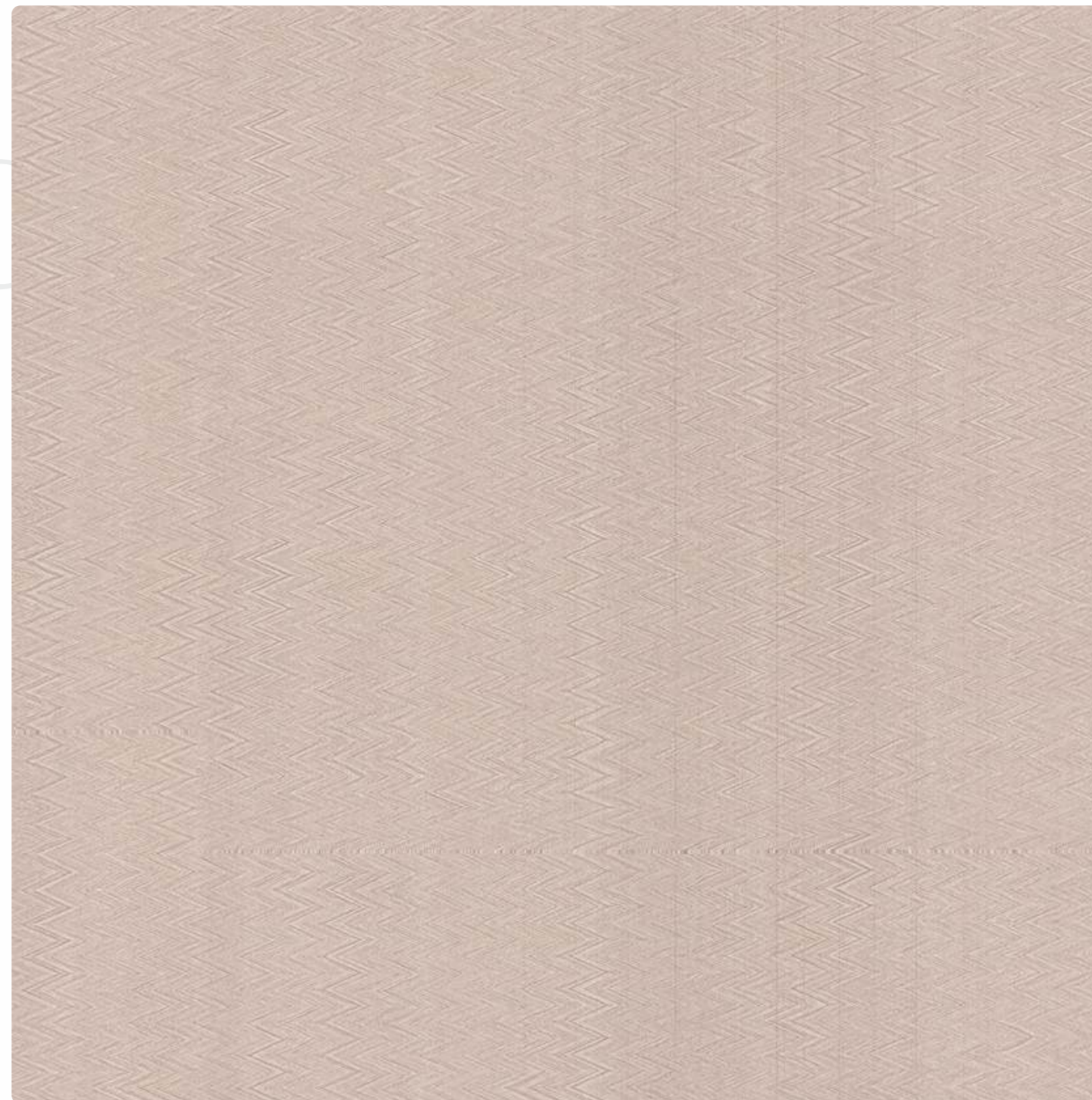
REFINED OPULENCE



HGL-2062
meandering beige



HGL-2061
meandering

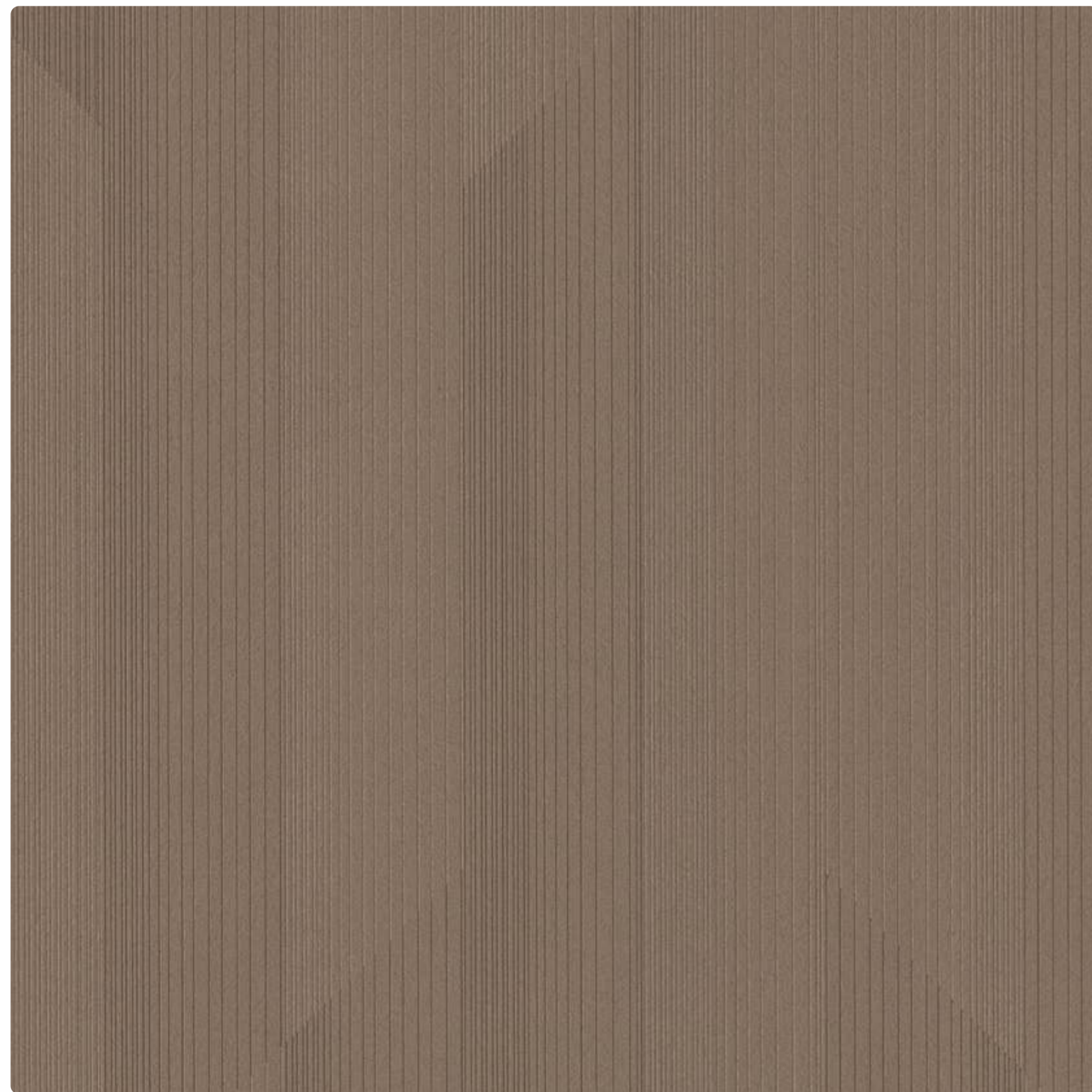


NT-07-2062
meandering beige

Gaze upon the understated elegance, where delicate golden threads converge in a soft, tactile whisper, presenting a simplicity that radiates an aura of refined tranquillity and subdued opulence.

DELICATE

NELTON[®]
— décoratif laminart —



NL-05-2057
cross-over



SM-2057
cross-over



ECO FRIENDLY
LOW VOC-ODOR



COEQUAL TO
NATURAL VENEER



1.00 / 1.25 MM
GENUINE THICKNESS



CONFORMITÉ
EUROPÉENNE



ADEQUATE
QUALITY

NELTON[®]
— décoratif laminart —

Witness the serene whispers of the forest translated into design; here, slender lines of umber flow in quiet parallel, evoking the sense of refined richness of woodland harmony in a reimagined with the abstract expression.





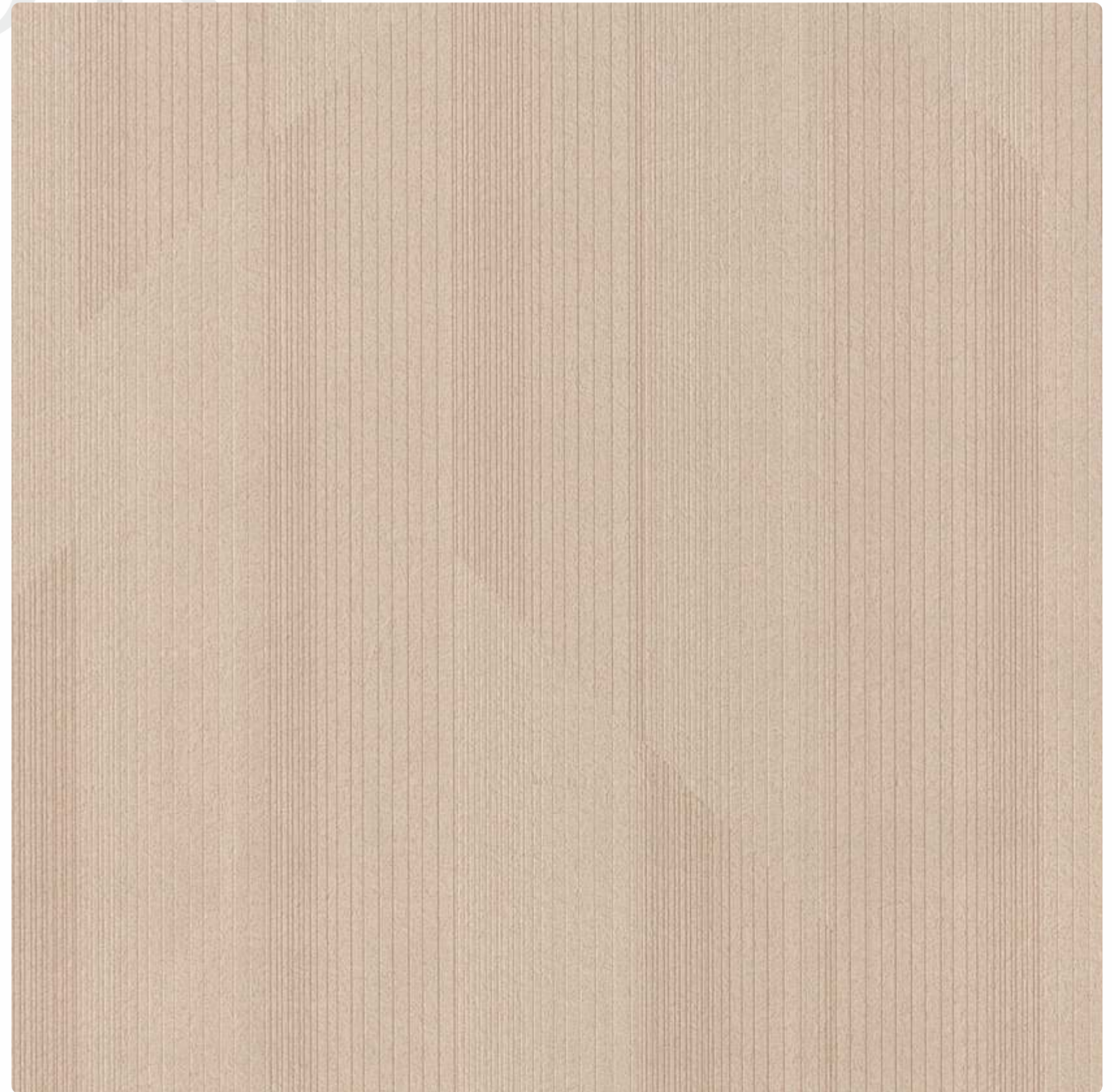
Experience a stroke of calmness, where pale blush lines glide effortlessly, creating a soothing visual rhythm, perfect for a tranquil retreat that speaks in soft tones of restful sophistication.

CALM STROKE

NELTON[®]
— décoratif laminart —

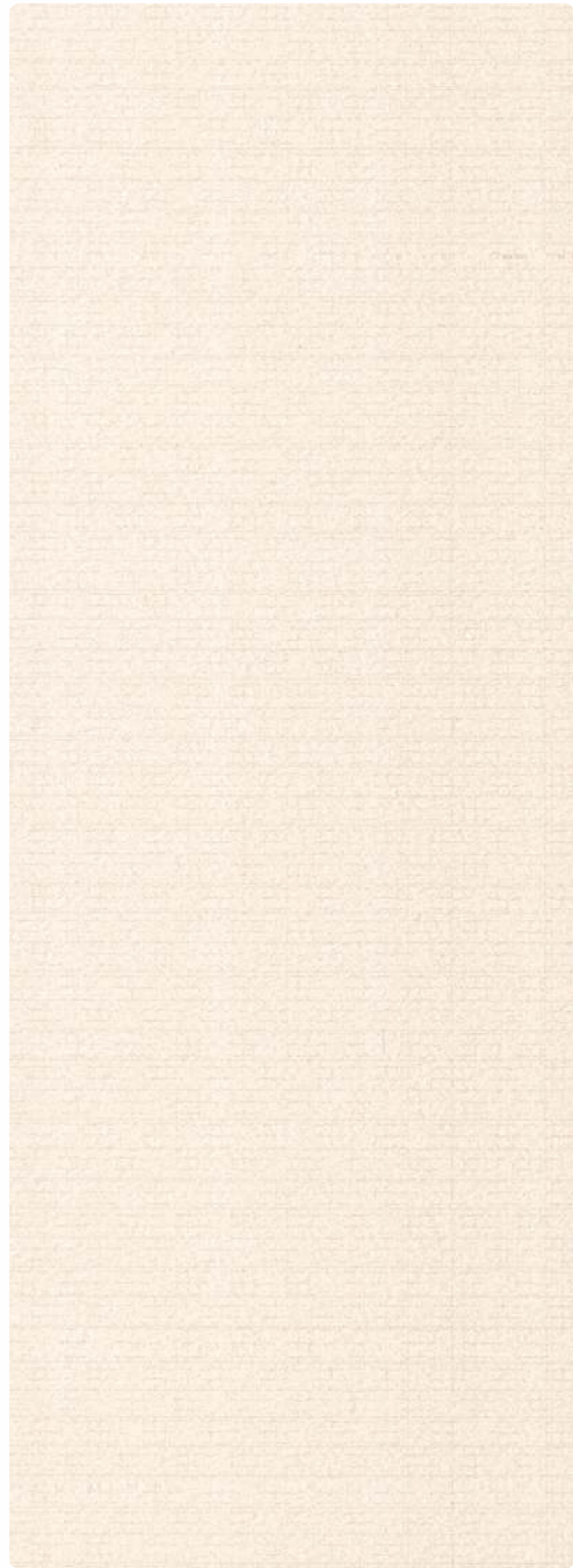


NL-05-2058
nude cross-over

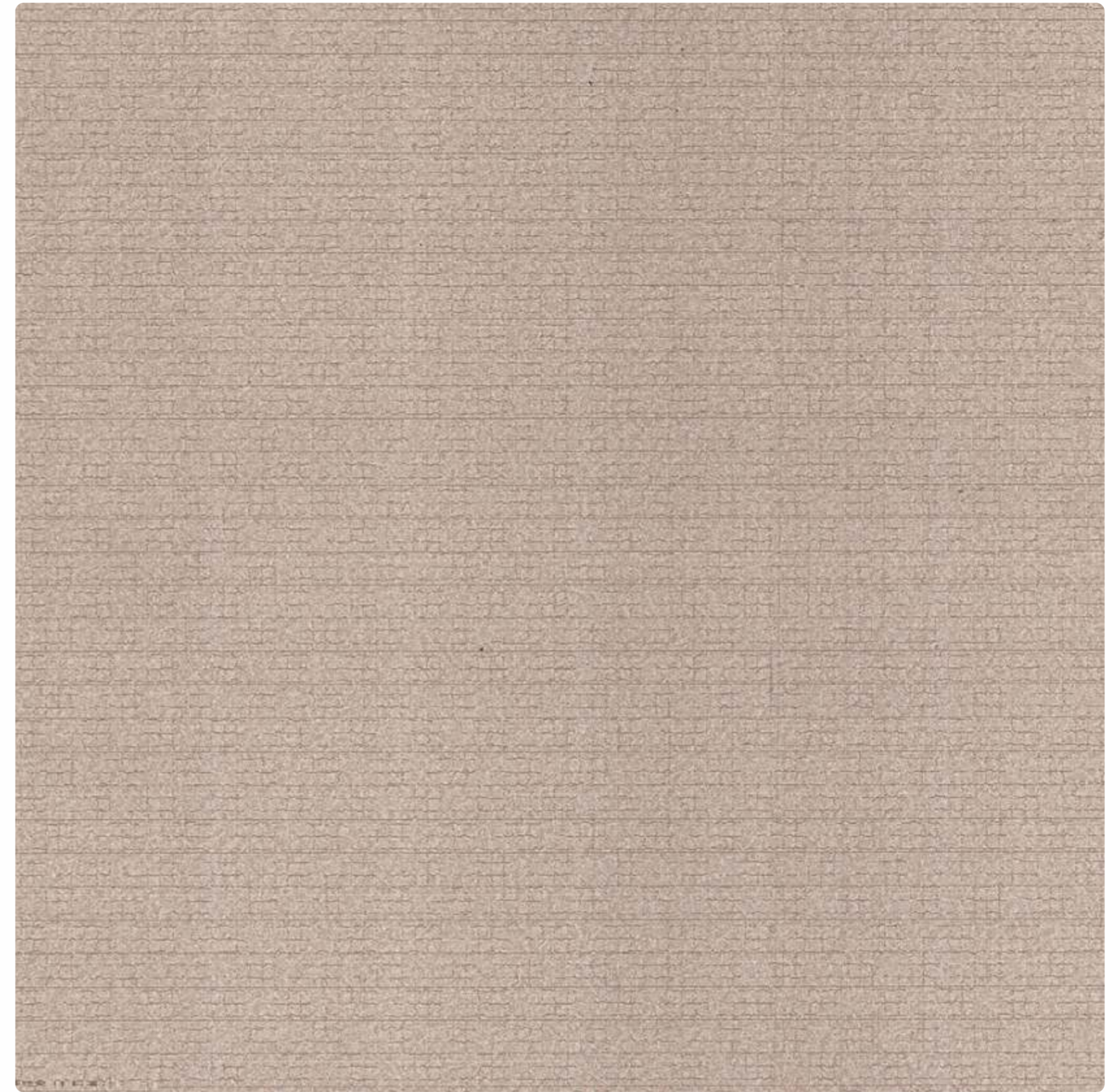


SM-2058
nude cross-over





SM-2060
latte cut



SM-2059
mocha cut

Drift into the muted embrace of this tapestry, where a fine matrix of stone-hued threads crafts an ambiance of serene minimalism, inviting a sense of peaceful order to any contemplative space.

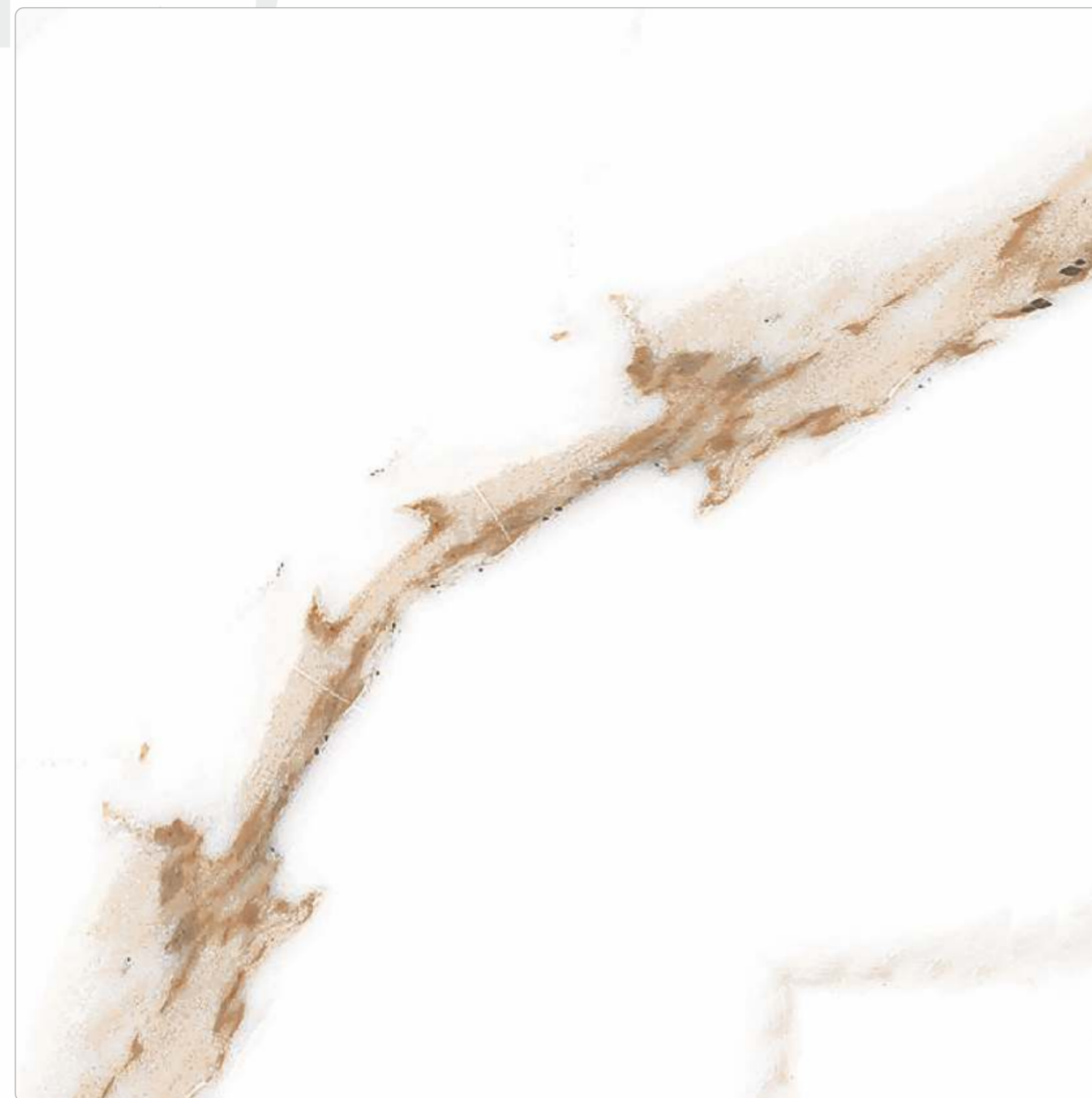
TAPESTRY

NELTON®
— décoratif laminart —

SWIRLS & WHIPS

Enter a world of ethereal beauty, where creamy swirls and earth-toned wisps flow like a gentle river, embodying an abstract landscape frozen in time, poised with elegance and whispering of wistful serenity.

NELTON[®]
— décoratif laminart —



NT-10-2206
orlando book

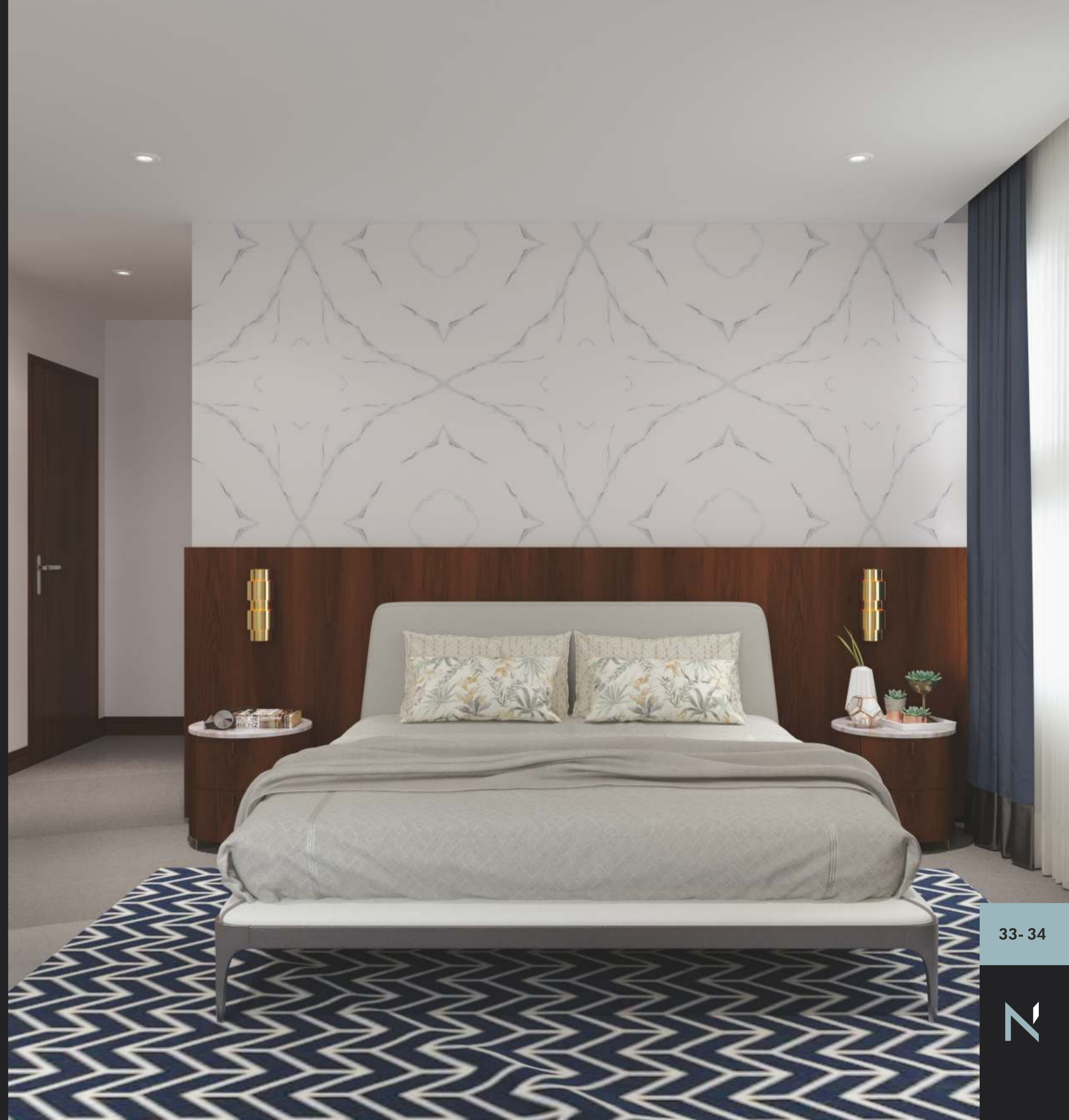




NT-10-2207
nova blue

NELTON[®]
— décoratif laminart —

The allure of this pristine expanse, where delicate marbling carves through the white canvas, offering a timeless celebration of elegant veins — a pure symphony in monochrome, perfect for ambient interiors.



CONTRAST



The dual nature of this surface, where soft cloud-like patterns meet a peppering of specks, crafting a visual narrative that celebrates the juxtaposition of smooth serenity and textured vitality.



ECO FRIENDLY
LOW VOC-ODOR



COEQUAL TO
NATURAL VENNER



1.00 / 1.25 MM
GENUINE THICKNESS



CE
CONFORMITÉ
EUROPÉENNE



ADEQUATE
QUALITY

NELTON[®]
— décoratif laminart —



ZMT-2202
sandstone



VEINS, STROKES & GRANDDEUR

A landscape of marbled elegance, where silvery veins etch across a canvas of stone, evoking the grandeur of ancient quarries in a portrait of natural sophistication and timeless allure.

NELTON[®]
— décoratif laminart —



8 X 4" SHEET VIEW
2201



NT-10-2201
arabescato



Traverse a realm where pristine white merges with warm cream, each streak a whisper of untouched wilderness, crafting a dual narrative of icy peaks and sun-kissed cliffs in a silent, celestial ballet.

LUMINOUS CANOPY



ECO FRIENDLY
LOW VOC-ODOR



COEQUAL TO
NATURAL VENNER



1.00 / 1.25 MM
GENUINE THICKNESS



CONFORMITÉ
EUROPÉENNE



ADEQUATE
QUALITY

NELTON[®]
— décoratif laminart —



NT-10-2203
museo cloudia



NT-10-2204
caramello

Traverse a realm where pristine white merges with warm cream, each streak a whisper of untouched wilderness, crafting a dual narrative of icy peaks and sun-kissed cliffs in a silent, celestial ballet.

LUMINOUS CANOPY



ECO FRIENDLY
LOW VOC-ODOR



COEQUAL TO
NATURAL VENNER



1.00 / 1.25 MM
GENUINE THICKNESS



CONFORMITÉ
EUROPÉENNE



ADEQUATE
QUALITY

NELTON[®]
— décoratif laminart —



NT-10-2203
museo cloudia



NT-10-2204
caramello





HGL-2040
brown rock stone



NT-09-2040
brown rock stone



HGL-2039
black rock stone



NT-09-2039
black rock stone



MYSTIC ONYX

Delve into the depth of this enigmatic slate, where shadows dance with an elusive sheen, crafting an aura of mystery that wraps any space in an embrace of sophisticated darkness.

Venture across this canvas of whispered taupe, where the subtle interplay of light and texture conjures an earthbound beauty, offering a quiet foundation that grounds any space in natural poise.

EARTHLY BEAUTY



ECO FRIENDLY
LOW VOC-ODOR



COEQUAL TO
NATURAL VENNER



1.00 / 1.25 MM
GENUINE THICKNESS



CE
CONFORMITÉ
EUROPÉENNE



ADEQUATE
QUALITY

NELTON[®]
— décoratif laminart —



HGL-2038
dholpuri brown



NT-10-2038
dholpuri brown





HGL-2037
dholpuri black



NT-10-2037
dholpuri black

Glide into the depths of this dusky expanse, where the understated play of dark hues creates a canvas of luxury, echoing the silent, enigmatic depths of a starless night sky.

NELTON[®]
— décoratif laminart —

OBSIDIAN WHISPER



RUSTIC PATINA

NELTON[®]
— décoratif laminart —



NT-08-2043
lava agate green



TERRA ESSENCE



NT-08-2042
lava brown



Delve into the depth of earthen allure, where a rich tapestry of coffee hues marries with the rawness of terrain, offering a robust foundation that anchors any space in the heart of nature's robustness.



HGL-2042
lava brown

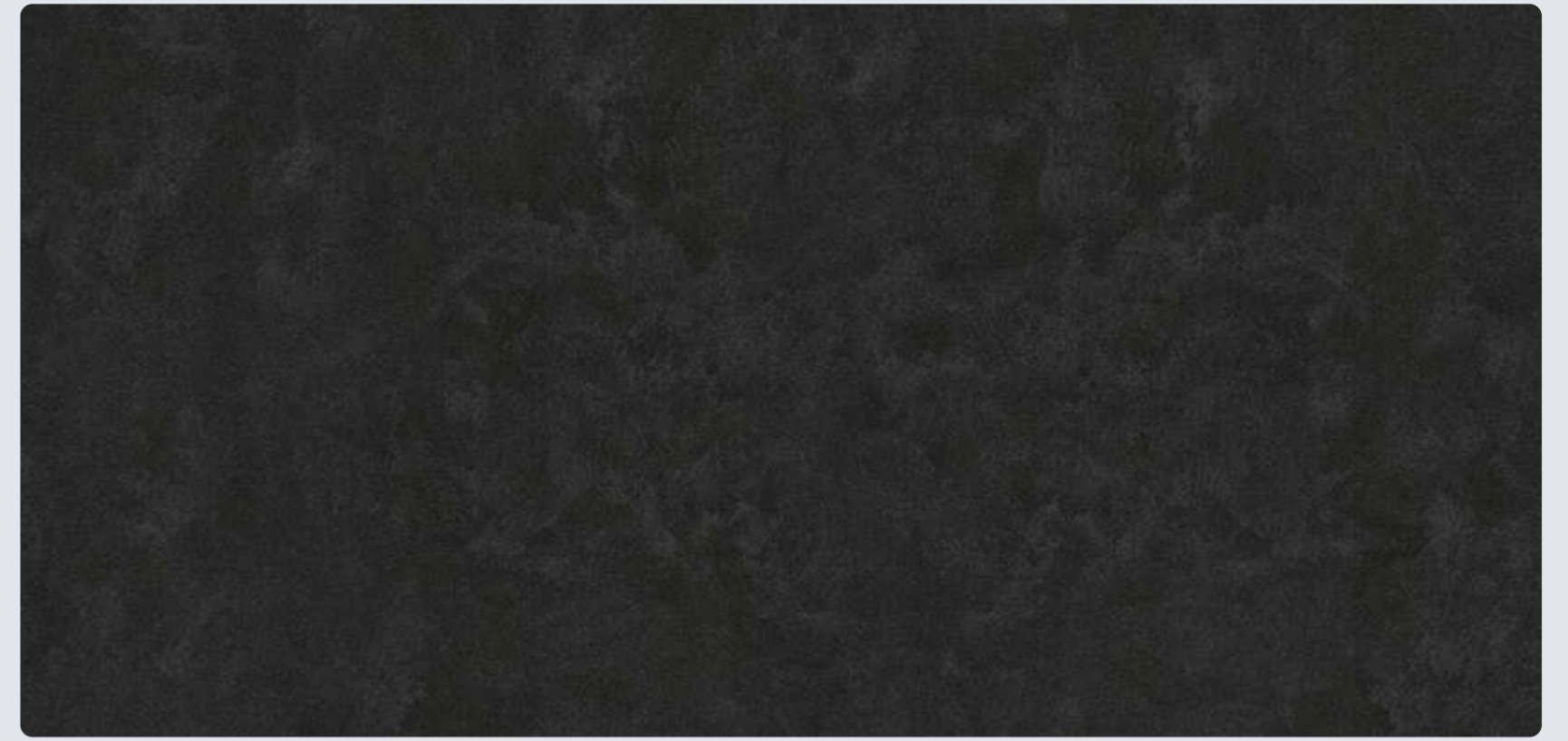


HGL-2043
lava agate green

NELTON[®]
— décoratif laminart —



NT-08-2041
black cloud fossil



HGL-2041
black cloud fossil

NELTON[®]
— décoratif laminart —



ECO FRIENDLY
LOW VOC-ODOR



COEQUAL TO
NATURAL VENNER



1.00 / 1.25 MM
GENUINE THICKNESS



CE
CONFORMITÉ
EUROPEENNE



ADEQUATE
QUALITY

this design is symbolized the natural patterned stone where the material is formed, changed, or altered by a process called fossilization. This process replaces organic materials in rock or stone with minerals that seep into the rock or other object eventually hardening.



INDEX

Sr.	Design No.	Design Name	Page
01	NT-05-2057	cross-over	25
02	NT-05-2058	nude cross-over	27
03	NT-07-2055	oblique deco	2
04	NT-07-2056	saddle stitch	19
05	NT-07-2061	meandering	21
06	NT-07-2062	meandering beige	24
07	NT-07-2205	scandinavian	4
08	NT-08-2041	black cloud fossil	51
09	NT-08-2042	lava brown	49
10	NT-08-2043	lava agate green	48
11	NT-09-2039	black rock stone	42
12	NT-09-2040	brown rock stone	41
13	NT-10-2037	dholpuri black	45
14	NT-10-2038	dholpuri brown	44
15	NT-10-2201	arabescato	38
16	NT-10-2203	museo cloudia	39

Sr.	Design No.	Design Name	Page
17	NT-10-2204	caramello	40
18	NT-10-2206	orlando book	32
19	NT-10-2207	nova blue	33
20	NT-11-2056	saddle stitch	20
21	NT-18-2208	grey lkkat	10
22	NT-18-2209	golden can	13
23	NT-18-2210	natural can	5
24	NT-18-2211	zigzag	7
25	NT-18-2212	golden bagru	11
26	NT-18-2214	hessian	17
27	NT-18-2215	checkered jute	8
28	NT-18-2216	aged zigzag	5
29	NT-18-2217	soft straw	18
30	NT-18-2218	grey bagru	12
31	NT-18-2219	grey jute	16
32	NT-18-2220	ink bloat jute	16

Sr.	Design No.	Design Name	Page
33	NT-18-2221	flaxen Entwine	17
34	NT-18-2222	rice straw	11
35	SM-2057	cross-over	25
36	SM-2058	nude cross-over	28
37	SM-2059	mocha cut	30
38	SM-2060	latte cut	29
39	HGL-2037	dholpuri black	45
40	HGL-2038	dholpuri brown	43
41	HGL-2039	black rock stone	42
42	HGL-2040	brown rock stone	41
43	HGL-2041	black cloud fossil	52
44	HGL-2042	lava brown	50
45	HGL-2043	lava agate green	50
46	HGL-2061	meandering	23
47	HGL-2062	meandering beige	23
48	ZMT-2202	sandstone	36

LIMITATIONS OF WARRENTY

High pressure Laminates are meant for indoor use only. Avoid using on areas exposed to direct sunshine or light reflective areas. It is warranted that under normal use and services, the material and Workmanship of their products shall conform to the standards set forth on the applicable technical data sheet for a period of twelve (12) months from the date of sale to the first consumer purchaser.

In the event that a product does not perform as warranted, the purchaser's sole remedy shall be limited to repair or replacement of all or any part of the product, which is defective, at the manufacturer's sole discretion.

Note: In our endeavor to get the actual color, there may be difference between the catalogue and actual product of the laminate due to difference in production batches. Kindly reconfirm your color, design, and finishes with our dealers / distributors before placing your order.

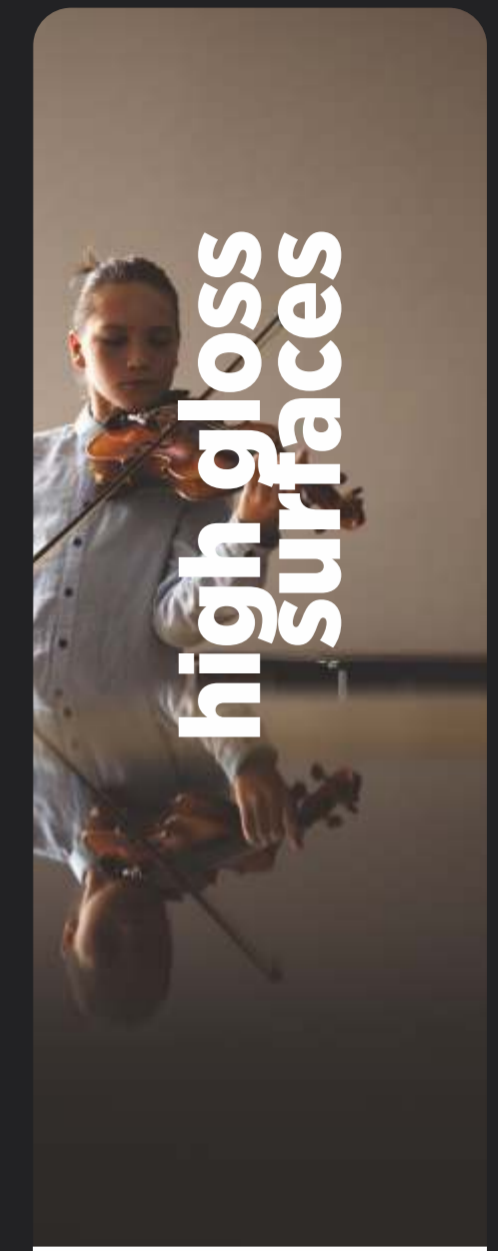
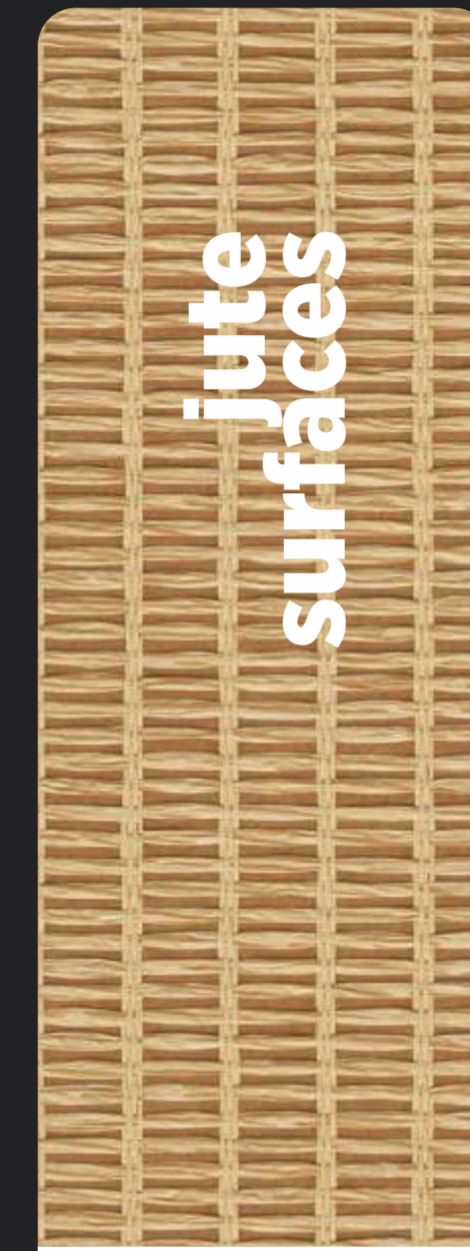
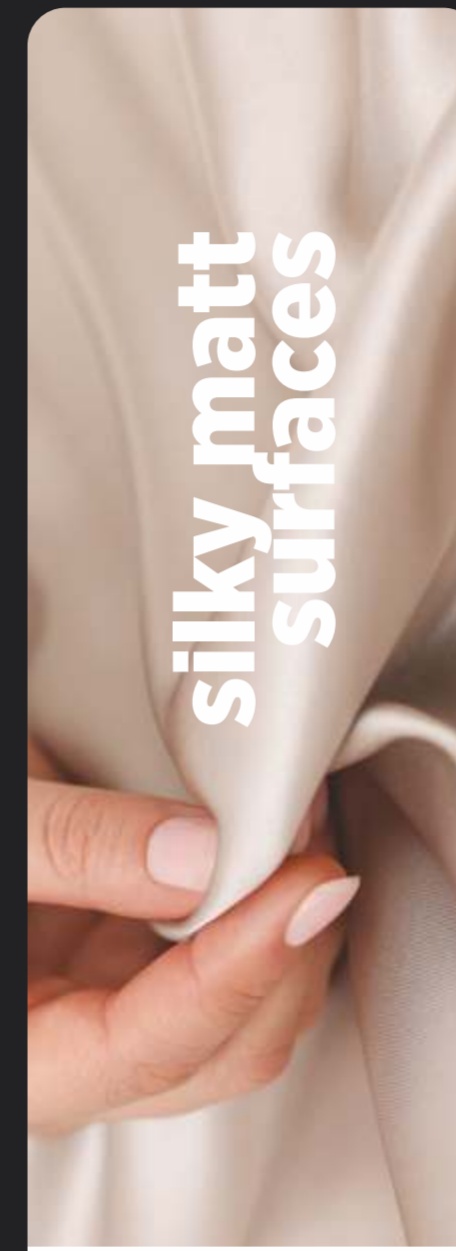
© 2024 All Right Reserved. In Case of any claims, the liability of the company is limited to the cost of the product only

PRODUCT SPECIFICATION

Property	IS2046-95 HGS TYPE	Typical Value HGS	IS2046/95 VGS TYPE	Typical Value VGS
Thickness Tolerance	±10%	±10%	±10%	±10%
Appearance	No ABC Defect	No ABC Defect	No ABC Defect	No ABC Defect
Surface Wear Resistance (cycle)	>350	>400	150	>150
Boiling Water Resistance				
Thickness Increase (max)	12%	8%	12%	8%
Weight Increase (max)	10%	8%	10%	8%
High Temperature Resistance	Slight Effect	Slight Effect	Slight Effect	Slight Effect
Reagents	1 and 2	No Effect	No Effect	No Effect
Reagents	3 and 4	Slight Effect	Slight Effect	Slight Effect
Small Dia Ball Resistance	20 N	22 N	15 N	17/b5
Dimensional	MD (max)	0/b5	0/b34	0/b5
	CD (max)	0/b8	0/b7	0/b7
Resistance to Dry Heat (180°)	Slight Change	Slight Change	Not Required	Not Required
Resistance to Cigarette Burn	Moderate Change	Moderate Change	Not Required	Not Required



As per order, premium products available in 1.25 mm Thickness



silky matt
surfaces



**silky matt
surfaces**



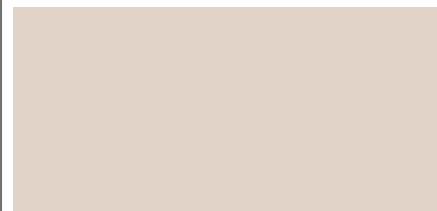
SMT - 237
SADDLE BROWN



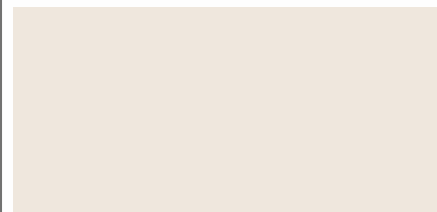
SMT - 228
WARM BROWN



SMT - 273
COOL BEIGE



SMT - 223
SALT WHITE



SMT - 229
SUPER WHITE

**silky matt
surfaces**



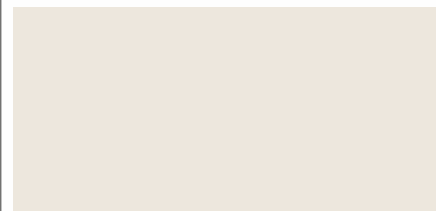
SMT - 225
CLOUDY GREY



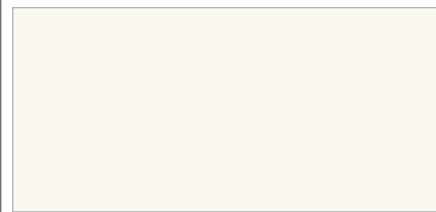
SMT - 205
MINK GREY



SMT - 235
ABALONE GREY



SMT - 218
RICE WHITE



SMT - 502
CHIFFON WHITE

**silky matt
surfaces**



SMT - 202
PIGEON BLUE



SMT - 209
ADMIRAL BLUE



SMT - 212
GEORGIA BLUE



SMT - 226
PALED TURQUOISE



SMT - 222
SUBTAL BLUE

**silky matt
surfaces**



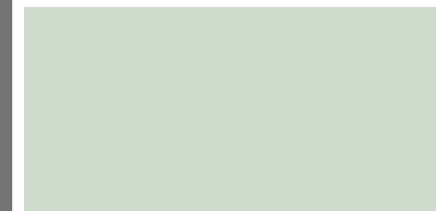
SMT - 210
CAROLINA BLUE



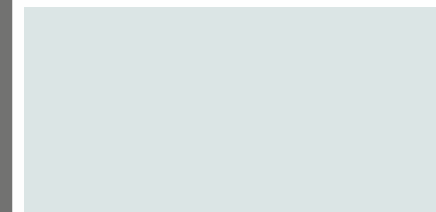
SMT - 254
NUDE PINK



SMT - 217
TURKISH BLUE



SMT - 211
MINT GREEN



SMT - 267
CLOUDY GREY

**silky matt
surfaces**



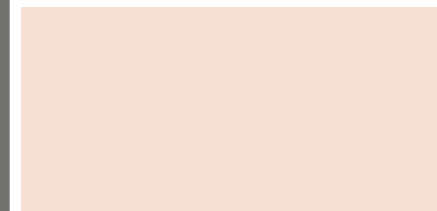
SMT - 252
LIGHT PURPLE



SMT - 220
POWDER BLUE



SMT - 234
PEACH BLUSH



SMT - 537
PORCELAIN BEIGE



SMT - 208
EGG NOG YELLOW

jute
surfaces

NELTON®
— décoratif laminart —

jute
surfaces



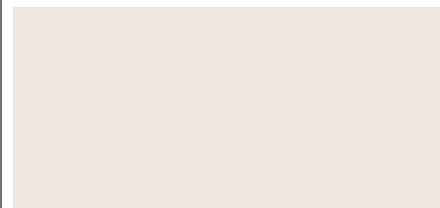
JT - 205
MINK GREY



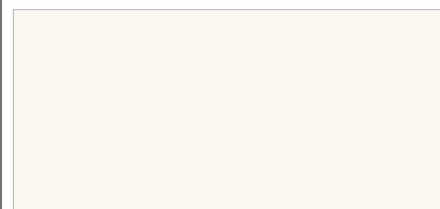
JT - 227
COCONUT BROWN



JT - 250
MOTH BROWN



JT - 229
SUPER WHITE



JT - 279
COOL GREY

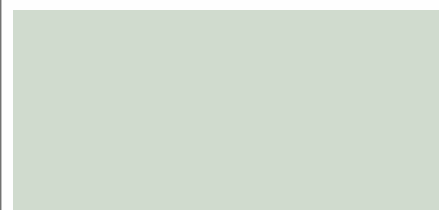
jute
surfaces



JT - 268
SLATE GREY



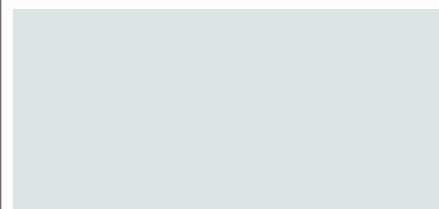
JT - 278
STEEL



JT - 211
MINT GREEN



JT - 202
PIGEON BLUE



JT - 267
CLOUDY GREY

jute
surfaces



JT - 226
PALED TURQUOISE



JT - 524
SIGNATURE GREY



JT - 272
SANGRIA



JT - 254
NUDE PINK



JT - 252
LIGHT PURPLE



high gloss surfaces

NELTON[®]
— décoratif laminart —

high gloss surfaces



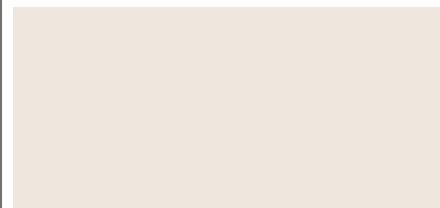
HGL - 254
NUDE PINK



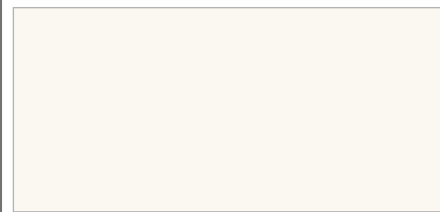
HGL - 228
WARM BROWN



HGL - 273
COOL BEIGE



HGL - 229
SUPER WHITE



HGL - 502
CHIFFON WHITE

high gloss surfaces



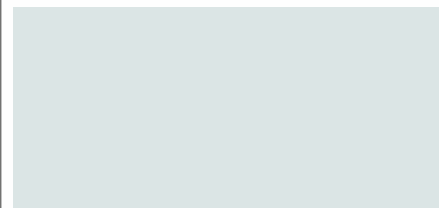
HGL - 212
GEORGIA BLUE



HGL - 219
BABY BLUE



HGL - 269
DOLPHIN GREY



HGL - 267
CLOUDY GREY



HGL - 253
CRISP PISTA

high gloss surfaces



HGL - 504
CROW BLACK



HGL - 240
SPACE BLUE



HGL - 215
SAPPHIRE BLUE



HGL - 216
CADET BLUE



HGL - 206
BABY PINK



NELSON LAMINATE PVT. LTD.

Haripar (Kerala) Road, 8-A National Highway, At. Nava Sadulka, Ta.Morbi(Gujarat) INDIA.

Email: nelsonlaminate@gmail.com | Web: www.nelsonlaminate.com

Contact: +91 9879025903, +91 8866681777